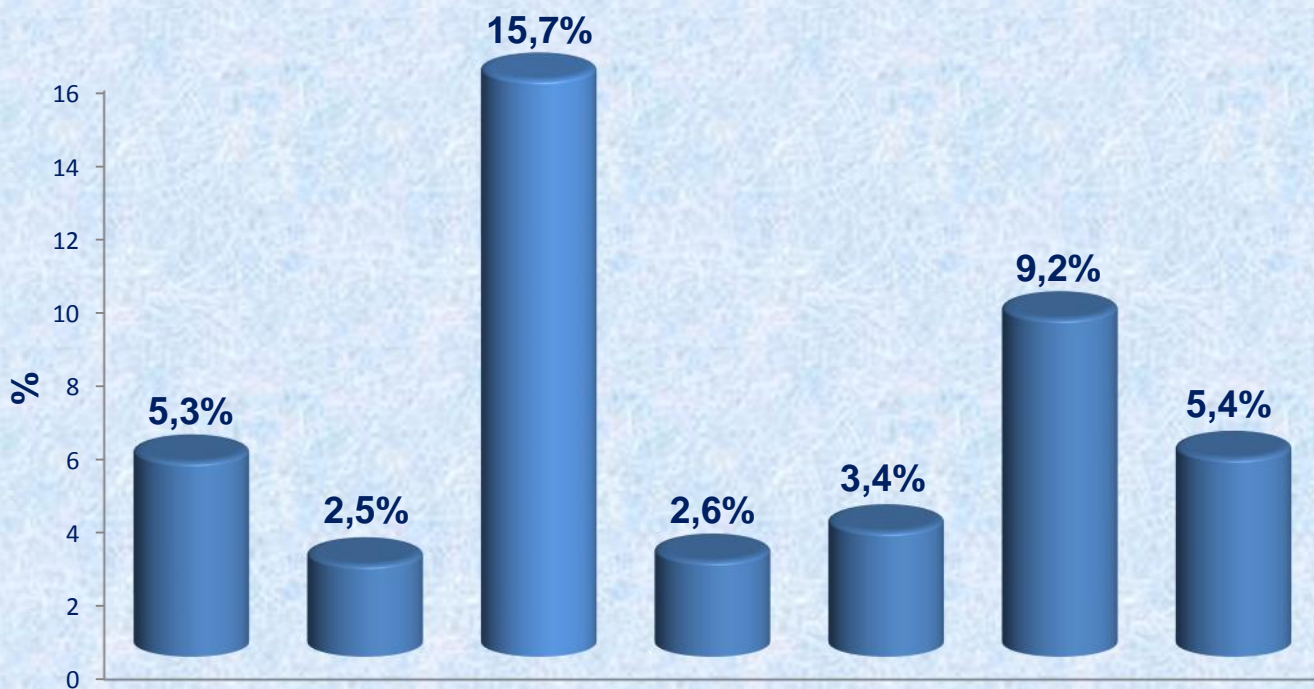


33,4 %),
 – 115,7 % (2018
 – 102,5 % (
 – 102,6 % (20,2 %),
 – 103,4 % (16,2 %)
 – 109,2 % (24,3 %)
2019 -

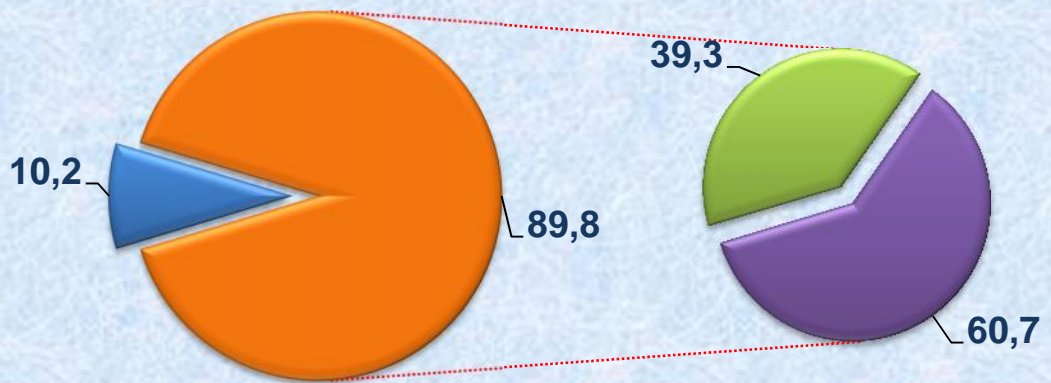


иқтисодий фаолият турлари

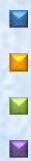
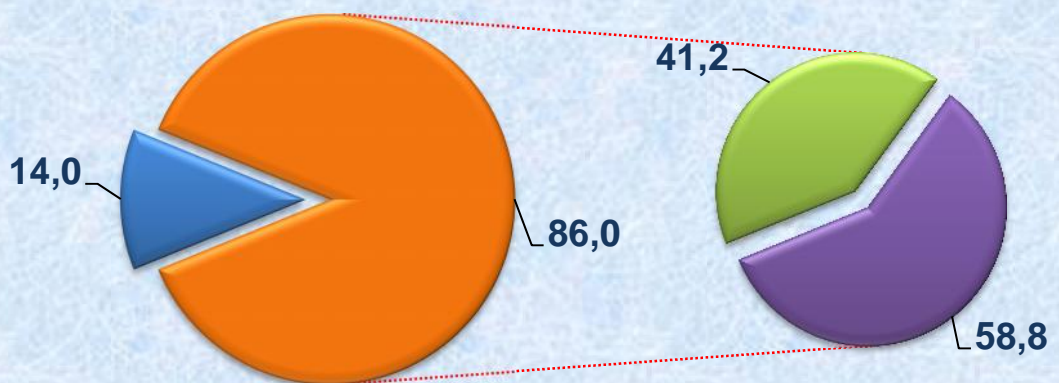
() , 14,0 % , 86,0 % ,
 () 41,2 % (2018
 - 39,3 %),
 58,8 % (60,7 %)

():

2018



2019



()

18,6 % (2018 - 20,2 %),
 - 14,4 % (16,2 %),
 - 25,8 % (24,3 %).

():

