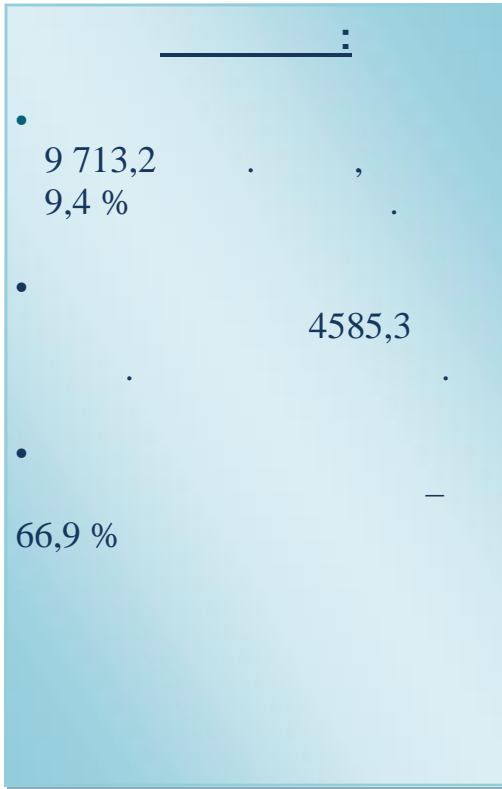




2018

-



2018

9 713,2

109,4 %

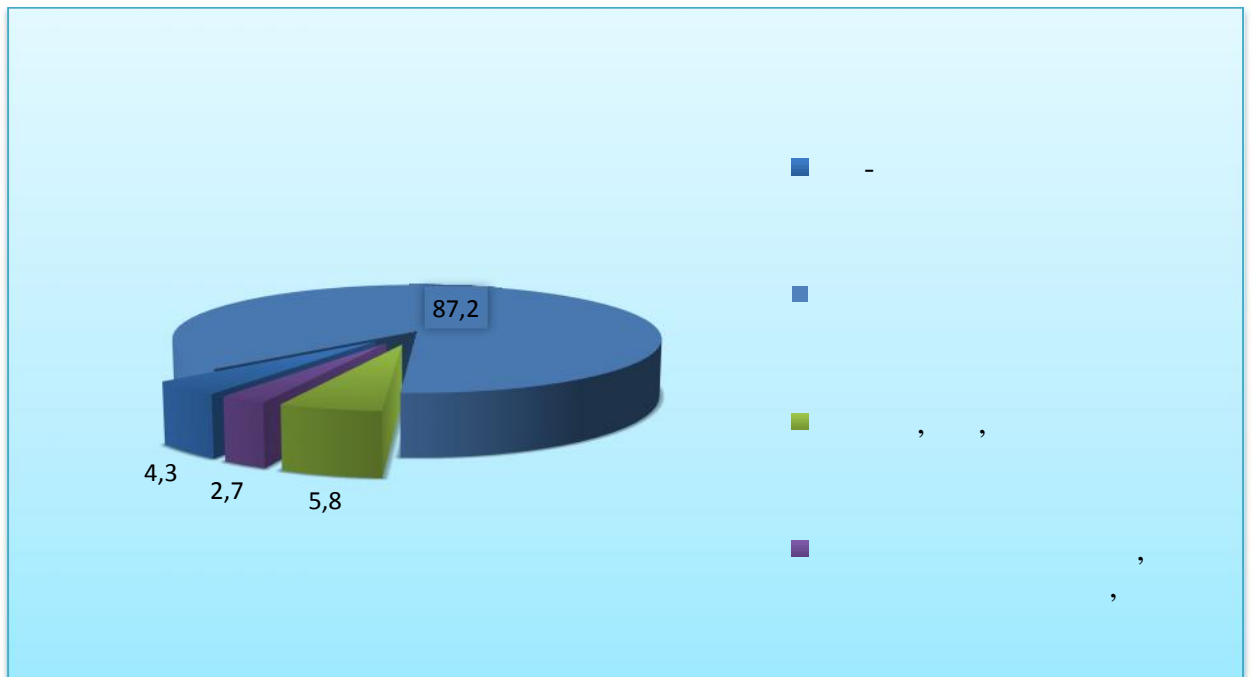
4585,3

66,9 %

419
8469,2

565,4

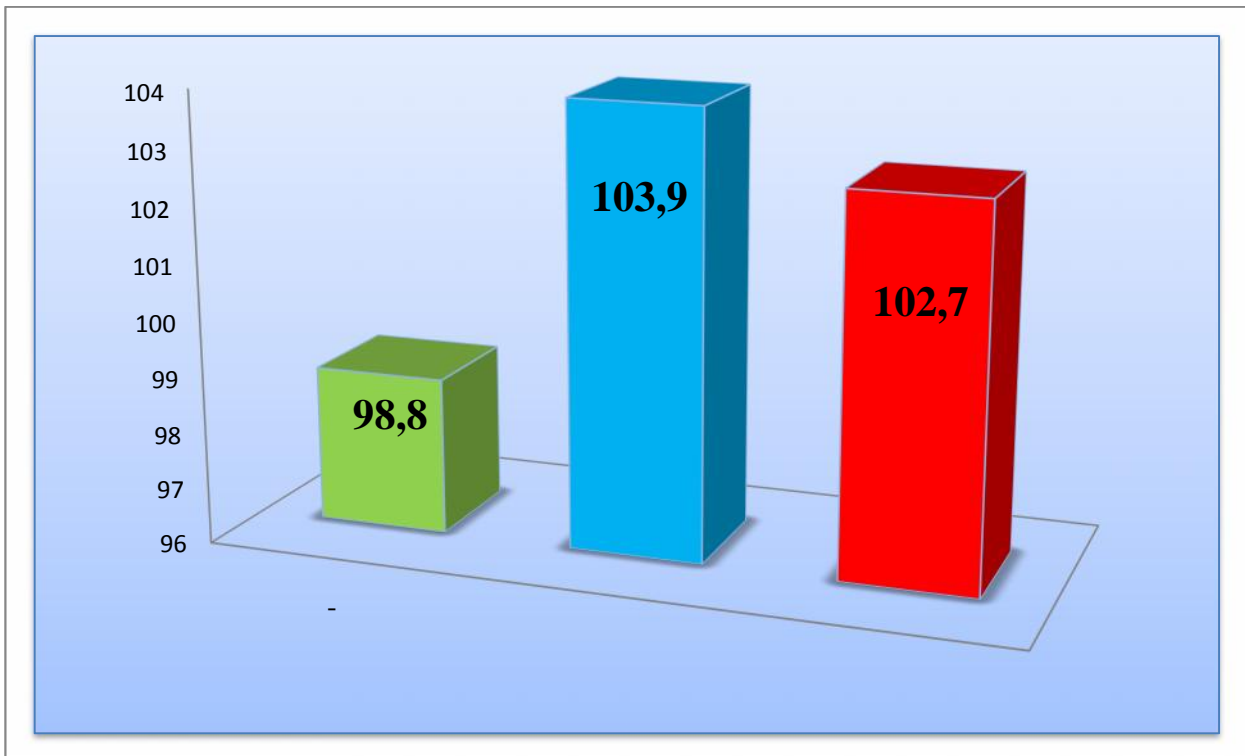
259,5



4585,3

101,6 %

2018



2025,2

43,5 %

2456,8

52,8 %

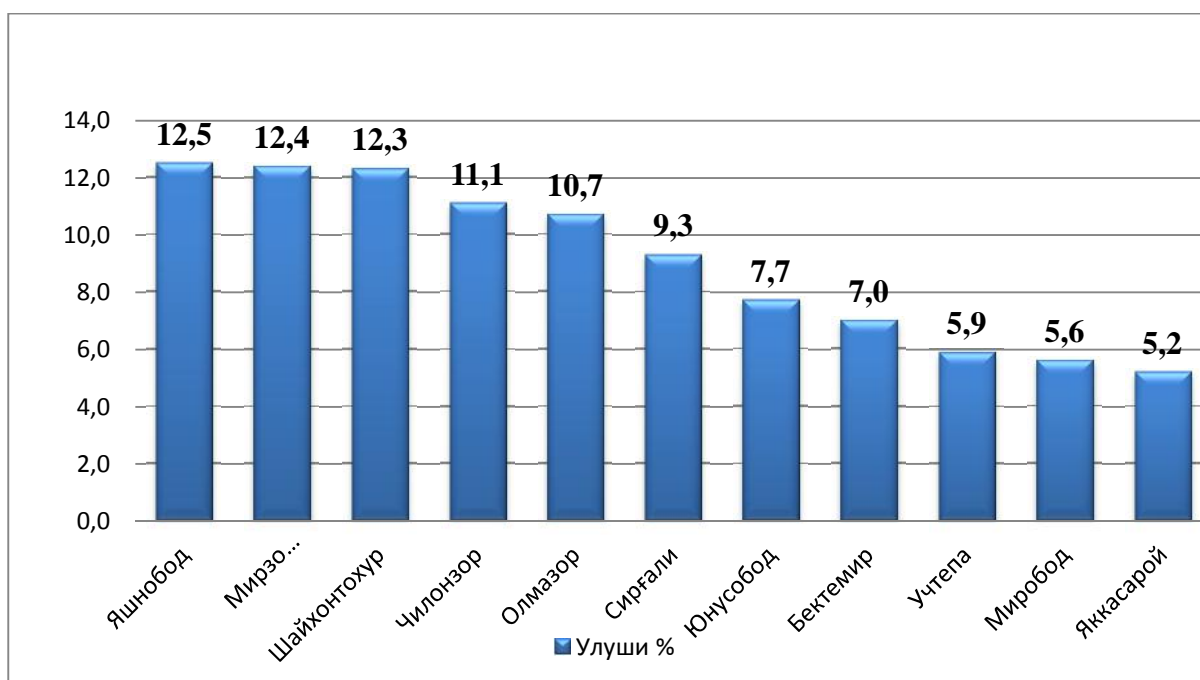
175,1

3,8 %

(12,3 %), (10,7 %), 12,5 % (12,4%), (11,1 %), (9,3 %),

2018

, %



(5,9 %),

(6,0 %),

(5,2 %)

