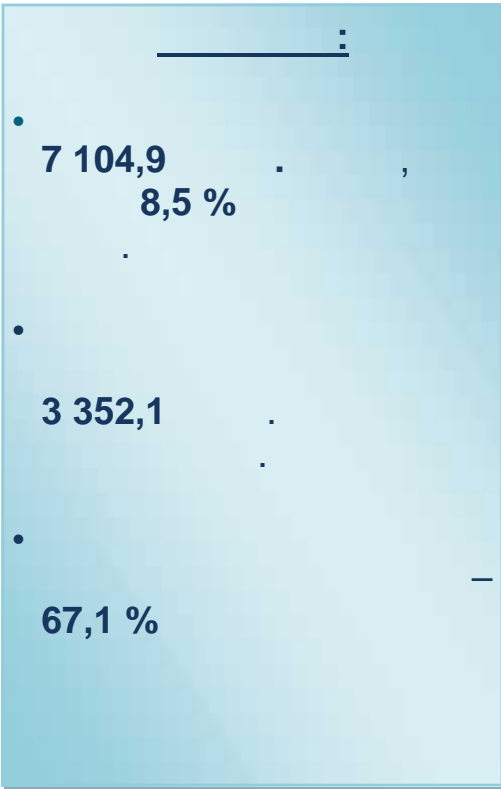




2018

2018



7 104,9

108,5 %

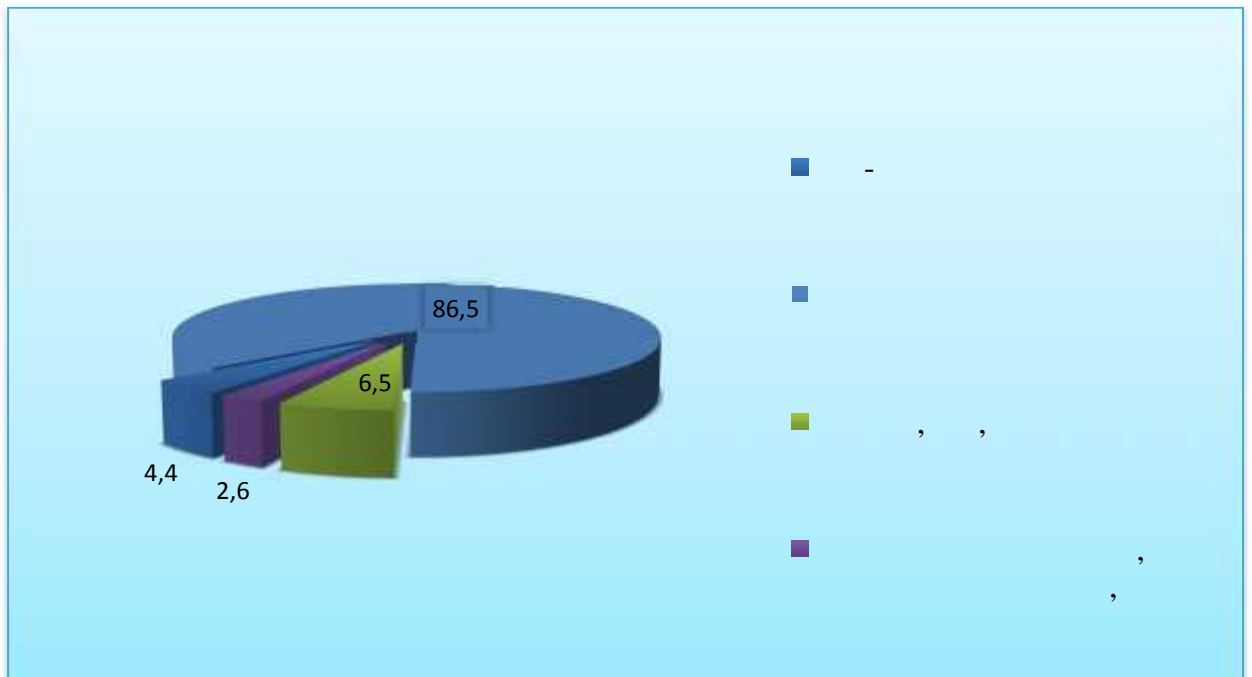
3 352,1

309,6  
6147,5

67,1 %

461,0

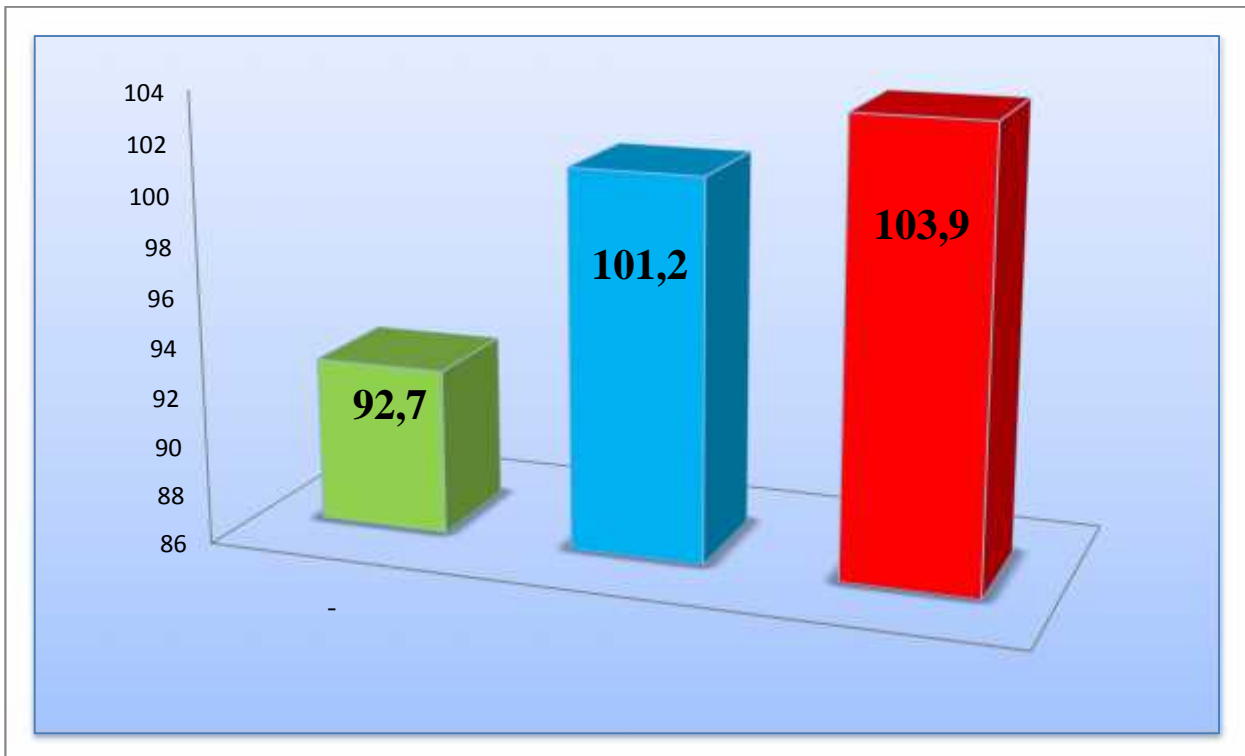
186,8



3 352,1

97,5 %

**2018**



1432,7

42,8 %

1787,4

53,3 %

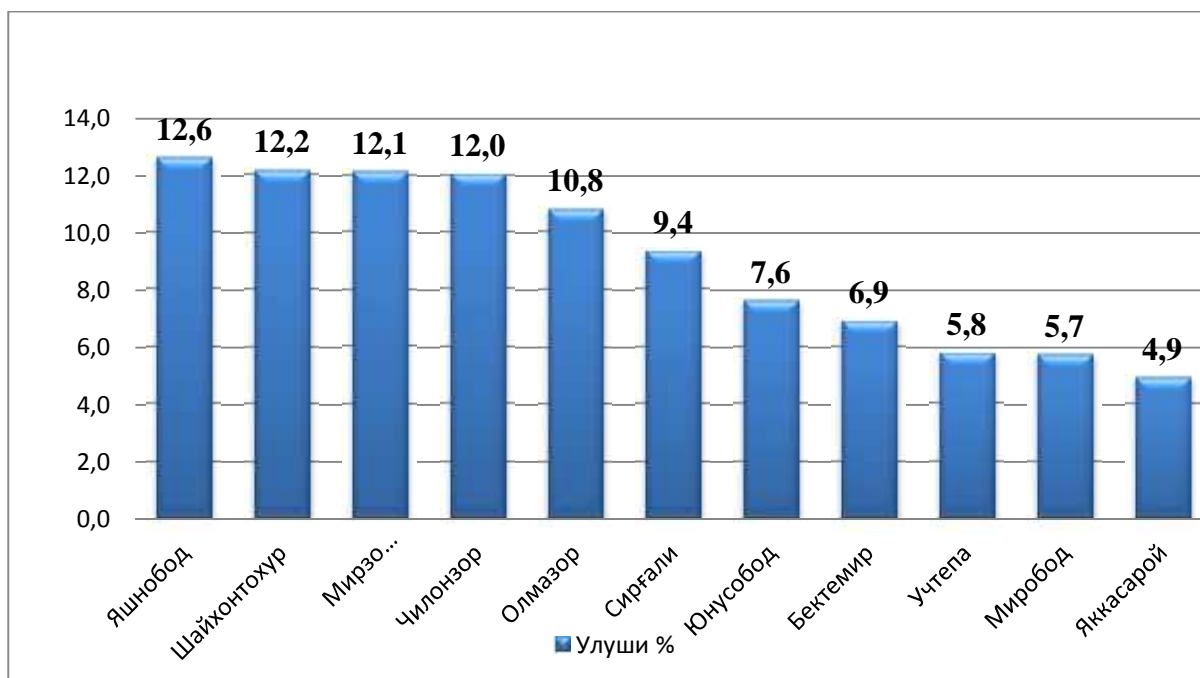
132,0

3,9 %

(12,2 %), (10,8 %), 12,6 %, (12,1%), (9,4 %), (12,0 %),

2018

, %



(5,8 %),

(5,7 %) ,

(5,0 %)

( , % )

